

**SINDH INSTITUTE OF OPHTHALMOLOGY AND VISUAL  
SCIENCES (SIOVS), HYDERABAD**

**(JANUARY-JULY) 2024 MONTH PERFORMANCE**

<b>❖ OPD (OUT PATIENTS DEPARTMENTS)</b>	<b>139,555</b>
<b>❖ OT (OPERATION THEATER) PROCEDURES</b>	<b>7,541</b>
<b>❖ INJECTION PATIZRA</b>	<b>2,112</b>

**SCIENTIFIC OPHTHALMIC RESEARCH LAB**

<b>S.No</b>	<b>Diagnosis</b>	<b>No. of Patients</b>
01	OCT	<b>3,234</b>
02	B-Scan	<b>8,208</b>
03	Perimetry	<b>177</b>
04	Yag Laser	<b>2,140</b>
05	Argon Laser	<b>647</b>
06	Corneal Topography	<b>126</b>
07	Specular Microscope	<b>270</b>
08	Blood Sugar	<b>7,089</b>
09	HCV	<b>5,134</b>
10	HBsAG	<b>5,134</b>
11	CBC	<b>1,969</b>
12	B.T & C.T	<b>325</b>
13	Plasma Preparation	<b>151</b>

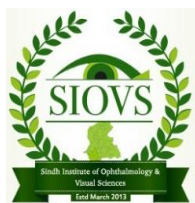


**SINDH INSTITUTE OF OPHTHALMOLOGY AND VISUAL  
SCIENCES (SIOVS), HYDERABAD**

**SIOVS EYE HOSPITAL KHAIRPUR**

**(JANUARY-JULY) 2024 MONTH PERFORMANCE**

Month	OPD	Admission	OT								Referred	Discharge	Medicine
			Major		Minor		Phaco	ECCE	SICS	AC Wash			
			Male	Female	Male	Female							
January	6,055	86	46	30	30	22	0	61	10	05	00	76	2,428
February	6,757	256	134	132	12	16	218	40	06	02	00	263	2,193
March	5,915	81	42	39	27	16	0	75	00	06	00	84	2,773
April	5,927	42	18	24	10	12	9	31	00	2	00	29	2,775
May	7,115	35	16	19	12	09	19	16	00	00	00	48	2,799
June	5,379	00	00	00	13	10	00	00	00	00	00	00	469
July	5,803	18	10	08	14	14	00	00	00	00	00	18	171



**SINDH INSTITUTE OF OPHTHALMOLOGY AND  
VISUAL SCIENCES (SIOVS), HYDERABAD**

Leading in  
disability inclusive  
development



**PCB (PREVENTION AND CONTROL OF BLINDNESS) PROGRAM**

**PERFORMANCE REPORT FROM 1<sup>ST</sup> JANUARY 2024 TO 31<sup>ST</sup> JULY 2024**

S. No	Name of Districts	Location	Total Triage/ OPD	Referred	Medicine Prescribed	Spectacles Prescriptions
01	District Khairpur Mir's	RHC Hingorija –PCB	1,414	20	868	575
02		RHC Garhi Mori-PCB	272	06	260	55
03		RHC Kumb - PCB	625	199	421	89
04		RHC Ranipur - PCB	1,987	18	1,631	154
05		RHC Faiz Ganj – PCB	2,484	93	2,174	468
06		SIOVS EYE Hospital Khairpur	288	00	00	00
<b>Total</b>			<b>7,070</b>	<b>336</b>	<b>5,354</b>	<b>1,341</b>
07	District Larkana	THQ Bakrani @ Arija - PCB	46	00	46	00
08		RHC Naudero-PCB	137	07	111	24
09		RHC Garhi Khuda Bux Bhutto – PCB	30	00	30	00
<b>Total</b>			<b>213</b>	<b>7</b>	<b>187</b>	<b>24</b>
10	District Shaheed Benazirabad	RHC Dour –PCB	337	00	26	142
11		RHC Shahpur Chakar –PCB	107	02	25	18
12		RHC Doulatpur –PCB	722	17	319	241
13		THQ Sakrand –PCB	414	18	309	130
14		SIOVS EYE Hospital Khairpur	08	03	00	01
15		THQ KAZI AHMED	258	06	69	149
<b>Total</b>			<b>1,846</b>	<b>46</b>	<b>748</b>	<b>681</b>
<b>Grand Total</b>			<b>9,129</b>	<b>389</b>	<b>6,289</b>	<b>2,046</b>

**JULY 2024 MONTH PERFORMANCE**

**COMMUNITY SCREENING -MATIARI**

	<b>Male</b>	<b>Female</b>	<b>Transgender</b>	<b>Total</b>
<b>No. of Screening:</b>	<b>3,060</b>	<b>7,107</b>	<b>221</b>	<b>10,388</b>
<b>+ove Outcome:</b>	<b>637</b>	<b>1,148</b>	<b>01</b>	<b>1,786</b>
<b>Triaged Patients</b>	<b>948</b>	<b>1,667</b>	<b>00</b>	<b>2,615</b>
<b>Referred to Ophthalmologist:</b>	<b>39</b>	<b>60</b>	<b>00</b>	<b>99</b>
<b>Attended Ophthalmologist</b>	<b>37</b>	<b>55</b>	<b>00</b>	<b>92</b>
<b>Referred at SIOVS</b>	<b>87</b>	<b>93</b>	<b>00</b>	<b>180</b>
<b>Eye Procedures at SIOVS</b>	<b>54</b>	<b>49</b>	<b>00</b>	<b>103</b>
<b>Glasses Prescribed</b>	<b>503</b>	<b>711</b>	<b>00</b>	<b>1,214</b>
<b>Near</b>	283	441	00	724
<b>Distance</b>	163	197	00	360
<b>Bi-Focal</b>	57	73	00	130
<b>Glasses Dispensed</b>	<b>10</b>	<b>09</b>	<b>00</b>	<b>19</b>
<b>Near</b>	02	04	00	06
<b>Distance</b>	04	02	00	06
<b>Bi-Focal</b>	04	03	00	07
<b>Active Users</b>				<b>17 Out of 23</b>

**JULY 2024 MONTH PERFORMANCE**

**HOUSEHOLD SCREENING -MATIARI**

	<b>Male</b>	<b>Female</b>	<b>Transgender</b>	<b>Total</b>
<b>No. of Screening:</b>	<b>8,726</b>	<b>11,515</b>	<b>233</b>	<b>20,474</b>
<b>+ove Outcome:</b>	<b>348</b>	<b>546</b>	<b>03</b>	<b>897</b>
<b>Triaged Patients</b>	<b>384</b>	<b>485</b>	<b>05</b>	<b>874</b>
<b>Referred to Ophthalmologist:</b>	<b>00</b>	<b>02</b>	<b>00</b>	<b>2</b>
<b>Attended Ophthalmologist</b>	<b>00</b>	<b>02</b>	<b>00</b>	<b>2</b>
<b>Referred at SIOVS</b>	<b>05</b>	<b>15</b>	<b>00</b>	<b>20</b>
<b>Eye Procedures at SIOVS</b>	<b>05</b>	<b>14</b>	<b>00</b>	<b>19</b>
<b>Glasses Prescribed</b>	<b>150</b>	<b>144</b>	<b>00</b>	<b>294</b>
<b>Near</b>	42	41	00	83
<b>Distance</b>	92	91	00	183
<b>Bi-Focal</b>	16	12	00	28
<b>Glasses Dispensed</b>	<b>00</b>	<b>00</b>	<b>00</b>	<b>00</b>
<b>Near</b>	00	00	00	00
<b>Distance</b>	00	00	00	00
<b>Bi-Focal</b>	00	00	00	00
<b>Active Users</b>				<b>107 out of 417</b>

**JULY 2024 MONTH PERFORMANCE**

**SCHOOL SCREENING -MATIARI**

	<b>Male</b>	<b>Female</b>	<b>Transgender</b>	<b>Total</b>
<b>No. of Screening:</b>	<b>291</b>	<b>04</b>	<b>00</b>	<b>295</b>
<b>+ove Outcome:</b>	<b>36</b>	<b>01</b>	<b>00</b>	<b>37</b>
<b>Triaged Patients</b>	<b>183</b>	<b>95</b>	<b>00</b>	<b>278</b>
<b>Referred to Ophthalmologist:</b>	<b>00</b>	<b>00</b>	<b>00</b>	<b>00</b>
<b>Attended Ophthalmologist</b>	<b>00</b>	<b>00</b>	<b>00</b>	<b>00</b>
<b>Referred at SIOVS</b>	<b>02</b>	<b>01</b>	<b>00</b>	<b>03</b>
<b>Eye Procedures at SIOVS</b>	<b>02</b>	<b>01</b>	<b>00</b>	<b>03</b>
<b>Glasses Prescribed</b>	<b>64</b>	<b>28</b>	<b>00</b>	<b>92</b>
<b>Near</b>	15	01	00	16
<b>Distance</b>	45	26	00	71
<b>Bi-Focal</b>	04	01	00	05
<b>Glasses Dispensed</b>	<b>00</b>	<b>00</b>	<b>00</b>	<b>00</b>
<b>Near</b>	00	00	00	00
<b>Distance</b>	00	00	00	00
<b>Bi-Focal</b>	00	00	00	00
<b>Active Users</b>				<b>02 out of 20</b>

**JULY 2024 MONTH PERFORMANCE**

**DRIVERS SCREENING -MATIARI**

	<b>Male</b>	<b>Female</b>	<b>Transgender</b>	<b>Total</b>
<b>No. of Screening:</b>	<b>00</b>	<b>00</b>	<b>00</b>	<b>00</b>
<b>Positive Outcome:</b>	<b>00</b>	<b>00</b>	<b>00</b>	<b>00</b>
<b>Triaged Patients</b>	<b>00</b>	<b>00</b>	<b>00</b>	<b>00</b>
<b>Referred to Ophthalmologist:</b>	<b>00</b>	<b>00</b>	<b>00</b>	<b>00</b>
<b>Attended Ophthalmologist</b>	<b>00</b>	<b>00</b>	<b>00</b>	<b>00</b>
<b>Referred at SIOVS</b>	<b>00</b>	<b>00</b>	<b>00</b>	<b>00</b>
<b>Eye Procedures at SIOVS</b>	<b>00</b>	<b>00</b>	<b>00</b>	<b>00</b>
<b>Glasses Prescribed</b>	<b>00</b>	<b>00</b>	<b>00</b>	<b>00</b>
<b>Near</b>	<b>00</b>	<b>00</b>	<b>00</b>	<b>00</b>
<b>Distance</b>	<b>00</b>	<b>00</b>	<b>00</b>	<b>00</b>
<b>Bi-Focal</b>	<b>00</b>	<b>00</b>	<b>00</b>	<b>00</b>
<b>Glasses Dispensed</b>	<b>00</b>	<b>00</b>	<b>00</b>	<b>00</b>
<b>Near</b>	<b>00</b>	<b>00</b>	<b>00</b>	<b>00</b>
<b>Distance</b>	<b>00</b>	<b>00</b>	<b>00</b>	<b>00</b>
<b>Bi-Focal</b>	<b>00</b>	<b>00</b>	<b>00</b>	<b>00</b>
<b>Active Users</b>				<b>00 OUT OF 01</b>

**JULY 2024 MONTH PERFORMANCE**

**COMMUNITY SCREENING -KHAIRPUR**

	Male	Female	Transgender	Total
<b>No. of Screening:</b>	<b>1207</b>	<b>1011</b>	<b>00</b>	<b>2,218</b>
<b>+ove Outcome:</b>	<b>675</b>	<b>394</b>	<b>00</b>	<b>1,069</b>
<b>Triaged Patients</b>	<b>684</b>	<b>389</b>	<b>00</b>	<b>1,073</b>
<b>Referred to Ophthalmologist:</b>	<b>14</b>	<b>07</b>	<b>00</b>	<b>21</b>
<b>Attended Ophthalmologist</b>	<b>08</b>	<b>03</b>	<b>00</b>	<b>11</b>
<b>Referred at SIOVS</b>	<b>00</b>	<b>00</b>	<b>00</b>	<b>00</b>
<b>Eye Procedures at SIOVS</b>	<b>00</b>	<b>00</b>	<b>00</b>	<b>00</b>
<b>Glasses Prescribed</b>	<b>207</b>	<b>91</b>	<b>00</b>	<b>298</b>
<b>Near</b>	71	52	00	123
<b>Distance</b>	128	37	00	165
<b>Bi-Focal</b>	08	02	00	10
<b>Glasses Dispensed</b>	<b>00</b>	<b>00</b>	<b>00</b>	<b>00</b>
<b>Near</b>	00	00	00	00
<b>Distance</b>	00	00	00	00
<b>Bi-Focal</b>	00	00	00	00
<b>Active Users</b>				<b>08 out of 14</b>



**JULY 2024 MONTH PERFORMANCE**

**SCHOOL SCREENING -KHAIRPUR**

	Male	Female	Transgender	Total
<b>No. of Screening:</b>	<b>02</b>	<b>01</b>	<b>00</b>	<b>03</b>
<b>+ove Outcome:</b>	<b>02</b>	<b>01</b>	<b>00</b>	<b>03</b>
<b>Triaged Patients</b>	<b>00</b>	<b>00</b>	<b>00</b>	<b>00</b>
<b>Referred to Ophthalmologist:</b>	<b>00</b>	<b>00</b>	<b>00</b>	<b>00</b>
<b>Attended Ophthalmologist</b>	<b>00</b>	<b>00</b>	<b>00</b>	<b>00</b>
<b>Referred at SIOVS</b>	<b>00</b>	<b>00</b>	<b>00</b>	<b>00</b>
<b>Eye Procedures at SIOVS</b>	<b>00</b>	<b>00</b>	<b>00</b>	<b>00</b>
<b>Glasses Prescribed</b>	<b>00</b>	<b>00</b>	<b>00</b>	<b>00</b>
<b>Near</b>	00	00	00	00
<b>Distance</b>	00	00	00	00
<b>Bi-Focal</b>	00	00	00	00
<b>Glasses Dispensed</b>	<b>00</b>	<b>00</b>	<b>00</b>	<b>00</b>
<b>Near</b>	00	00	00	00
<b>Distance</b>	00	00	00	00
<b>Bi-Focal</b>	00	00	00	00
<b>Active Users</b>				<b>00 out of 03</b>

## JULY 2024 MONTH PERFORMANCE

### COMMUNITY SCREENING -LARKANA

	Male	Female	Transgender	Total
<b>No. of Screening:</b>	<b>379</b>	<b>1818</b>	<b>01</b>	<b>03</b>
<b>+ove Outcome:</b>	<b>53</b>	<b>652</b>	<b>00</b>	<b>03</b>
<b>Triaged Patients</b>	<b>00</b>	<b>00</b>	<b>00</b>	<b>00</b>
<b>Referred to Ophthalmologist:</b>	<b>00</b>	<b>07</b>	<b>00</b>	<b>00</b>
<b>Attended Ophthalmologist</b>	<b>00</b>	<b>00</b>	<b>00</b>	<b>00</b>
<b>Referred at CMC</b>	<b>00</b>	<b>00</b>	<b>00</b>	<b>00</b>
<b>Eye Procedures at CMC</b>	<b>00</b>	<b>00</b>	<b>00</b>	<b>00</b>
<b>Glasses Prescribed</b>	<b>00</b>	<b>00</b>	<b>00</b>	<b>00</b>
<b>Near</b>	00	00	00	00
<b>Distance</b>	00	00	00	00
<b>Bi-Focal</b>	00	00	00	00
<b>Glasses Dispensed</b>	<b>00</b>	<b>00</b>	<b>00</b>	<b>00</b>
<b>Near</b>	00	00	00	00
<b>Distance</b>	00	00	00	00
<b>Bi-Focal</b>	00	00	00	00
<b>Active Users</b>				<b>05 out of</b>

**JULY 2024 MONTH PERFORMANCE**

**SCHOOL SCREENING -LARKANA**

	<b>Male</b>	<b>Female</b>	<b>Transgender</b>	<b>Total</b>
<b>No. of Screening:</b>	<b>00</b>	<b>00</b>	<b>00</b>	<b>00</b>
<b>Follow Up Outcome:</b>	<b>00</b>	<b>00</b>	<b>00</b>	<b>00</b>
<b>Triaged Patients</b>	<b>00</b>	<b>00</b>	<b>00</b>	<b>00</b>
<b>Referred to Ophthalmologist:</b>	<b>00</b>	<b>00</b>	<b>00</b>	<b>00</b>
<b>Attended Ophthalmologist</b>	<b>00</b>	<b>00</b>	<b>00</b>	<b>00</b>
<b>Referred at CMC</b>	<b>00</b>	<b>00</b>	<b>00</b>	<b>00</b>
<b>Eye Procedures at CMC</b>	<b>00</b>	<b>00</b>	<b>00</b>	<b>00</b>
<b>Glasses Prescribed</b>	<b>00</b>	<b>00</b>	<b>00</b>	<b>00</b>
<b>Near</b>	00	00	00	00
<b>Distance</b>	00	00	00	00
<b>Bi-Focal</b>	00	00	00	00
<b>Glasses Dispensed</b>	<b>00</b>	<b>00</b>	<b>00</b>	<b>00</b>
<b>Near</b>	00	00	00	00
<b>Distance</b>	00	00	00	00
<b>Bi-Focal</b>	00	00	00	00
<b>Active Users</b>				<b>00 out of 03</b>

**JULY 2024 MONTH PERFORMANCE****COMMUNITY SCREENING –SHAHEED BENAZIR ABAD**

	<b>Male</b>	<b>Female</b>	<b>Transgender</b>	<b>Total</b>
<b>No. of Screening:</b>	<b>1,396</b>	<b>2,201</b>	<b>94</b>	<b>3,691</b>
<b>+ove Outcome:</b>	<b>139</b>	<b>202</b>	<b>07</b>	<b>348</b>
<b>Triaged Patients</b>	<b>231</b>	<b>227</b>	<b>05</b>	<b>463</b>
<b>Referred to Ophthalmologist:</b>	<b>10</b>	<b>04</b>	<b>00</b>	<b>14</b>
<b>Attended Ophthalmologist</b>	<b>00</b>	<b>00</b>	<b>00</b>	<b>00</b>
<b>Referred at SIOVS</b>	<b>01</b>	<b>06</b>	<b>00</b>	<b>07</b>
<b>Eye Procedures at SIOVS</b>	<b>01</b>	<b>06</b>	<b>00</b>	<b>07</b>
<b>Glasses Prescribed</b>	<b>98</b>	<b>81</b>	<b>00</b>	<b>179</b>
<b>Near</b>	35	51	00	86
<b>Distance</b>	04	09	00	13
<b>Bi-Focal</b>	59	21	00	80
<b>Glasses Dispensed</b>	<b>00</b>	<b>00</b>	<b>00</b>	<b>00</b>
<b>Near</b>	00	00	00	00
<b>Distance</b>	00	00	00	00
<b>Bi-Focal</b>	00	00	00	00
<b>Active Users</b>				<b>12 out of 16</b>

**JULY 2024 MONTH PERFORMANCE**

**SCHOOL SCREENING –SHAHEED BENAZIR ABAD**

	Male	Female	Transgender	Total
<b>No. of Screening:</b>	<b>00</b>	<b>00</b>	<b>00</b>	<b>00</b>
<b>+ove Outcome:</b>	<b>00</b>	<b>00</b>	<b>00</b>	<b>00</b>
<b>Triaged Patients</b>	<b>00</b>	<b>00</b>	<b>00</b>	<b>00</b>
<b>Referred to Ophthalmologist:</b>	<b>00</b>	<b>00</b>	<b>00</b>	<b>00</b>
<b>Attended Ophthalmologist</b>	<b>00</b>	<b>00</b>	<b>00</b>	<b>00</b>
<b>Referred at SIOVS</b>	<b>00</b>	<b>00</b>	<b>00</b>	<b>00</b>
<b>Eye Procedures at SIOVS</b>	<b>00</b>	<b>00</b>	<b>00</b>	<b>00</b>
<b>Glasses Prescribed</b>	<b>00</b>	<b>00</b>	<b>00</b>	<b>00</b>
<b>Near</b>	00	00	00	00
<b>Distance</b>	00	00	00	00
<b>Bi-Focal</b>	00	00	00	00
<b>Glasses Dispensed</b>	<b>00</b>	<b>00</b>	<b>00</b>	<b>00</b>
<b>Near</b>	00	00	00	00
<b>Distance</b>	00	00	00	00
<b>Bi-Focal</b>	00	00	00	00
<b>Active Users</b>				<b>00 out of 02</b>

**2<sup>ND</sup> QUARTER (JANUARY-JUNE) 2024 MONTH PERFORMANCE**

**COMMUNITY SCREENING -MATIARI**

	<b>Male</b>	<b>Female</b>	<b>Transgender</b>	<b>Total</b>
<b>No. of Screening:</b>	<b>24,992</b>	<b>50,468</b>	<b>701</b>	<b>76,161</b>
<b>Positive Outcome:</b>	<b>2,598</b>	<b>4,039</b>	<b>03</b>	<b>6,640</b>
<b>Triaged Patients</b>	<b>2,289</b>	<b>3,722</b>	<b>02</b>	<b>6,013</b>
<b>Referred to Ophthalmologist:</b>	<b>210</b>	<b>500</b>	<b>00</b>	<b>710</b>
<b>Attended Ophthalmologist</b>	<b>73</b>	<b>199</b>	<b>00</b>	<b>272</b>
<b>Referred at SIOVS</b>	<b>95</b>	<b>102</b>	<b>00</b>	<b>197</b>
<b>Eye Procedures at SIOVS</b>	<b>80</b>	<b>92</b>	<b>00</b>	<b>172</b>
<b>Glasses Prescribed</b>	<b>1,111</b>	<b>1,945</b>	<b>00</b>	<b>3,056</b>
<b>Near</b>	521	1059	00	1,580
<b>Distance</b>	437	678	00	1,115
<b>Bi-Focal</b>	153	208	00	361
<b>Glasses Dispensed</b>	<b>202</b>	<b>313</b>	<b>00</b>	<b>515</b>
<b>Near</b>	08	07	00	15
<b>Distance</b>	150	249	00	399
<b>Bi-Focal</b>	44	57	00	101
<b>Active Users</b>				<b>23 out of 23</b>

**2<sup>ND</sup> QUARTER (JANUARY-JUNE) 2024 MONTH PERFORMANCE**

**HOUSEHOLD SCREENING -MATIARI**

	Male	Female	Transgender	Total
<b>No. of Screening:</b>	<b>54,411</b>	<b>73,089</b>	<b>259</b>	<b>127,759</b>
<b>Follow-up Outcome:</b>	<b>2,221</b>	<b>3,341</b>	<b>06</b>	<b>5,568</b>
<b>Triaged Patients</b>	<b>1,198</b>	<b>1,681</b>	<b>07</b>	<b>2,886</b>
<b>Referred to Ophthalmologist:</b>	<b>31</b>	<b>44</b>	<b>05</b>	<b>80</b>
<b>Attended Ophthalmologist</b>	<b>30</b>	<b>44</b>	<b>00</b>	<b>74</b>
<b>Referred at SIOVS</b>	<b>15</b>	<b>25</b>	<b>00</b>	<b>40</b>
<b>Eye Procedures at SIOVS</b>	<b>13</b>	<b>23</b>	<b>00</b>	<b>36</b>
<b>Glasses Prescribed</b>	<b>537</b>	<b>752</b>	<b>01</b>	<b>1,290</b>
<b>Near</b>	257	369	01	627
<b>Distance</b>	253	327	03	583
<b>Bi-Focal</b>	27	56	00	83
<b>Glasses Dispensed</b>	<b>15</b>	<b>15</b>	<b>00</b>	<b>30</b>
<b>Near</b>	00	00	00	00
<b>Distance</b>	15	15	00	30
<b>Bi-Focal</b>	00	00	00	00
<b>Active Users</b>				<b>301 out of 417</b>

**2<sup>ND</sup> QUARTER (JANUARY-JUNE) 2024 MONTH PERFORMANCE****SCHOOL SCREENING -MATIARI**

	<b>Male</b>	<b>Female</b>	<b>Transgender</b>	<b>Total</b>
<b>No. of Screening:</b>	<b>15,047</b>	<b>6,216</b>	<b>00</b>	<b>21,263</b>
<b>+ove Outcome:</b>	<b>1,252</b>	<b>529</b>	<b>00</b>	<b>1,781</b>
<b>Triaged Patients</b>	<b>753</b>	<b>567</b>	<b>00</b>	<b>1,320</b>
<b>Referred to Ophthalmologist:</b>	<b>05</b>	<b>01</b>	<b>00</b>	<b>06</b>
<b>Attended Ophthalmologist</b>	<b>05</b>	<b>01</b>	<b>00</b>	<b>06</b>
<b>Referred at SIOVS</b>	<b>08</b>	<b>02</b>	<b>00</b>	<b>10</b>
<b>Eye Procedures at SIOVS</b>	<b>08</b>	<b>02</b>	<b>00</b>	<b>10</b>
<b>Glasses Prescribed</b>	<b>342</b>	<b>106</b>	<b>00</b>	<b>448</b>
<b>Near</b>	41	04	00	45
<b>Distance</b>	293	101	00	394
<b>Bi-Focal</b>	08	01	00	09
<b>Glasses Dispensed</b>	<b>33</b>	<b>13</b>	<b>00</b>	<b>46</b>
<b>Near</b>	08	00	00	08
<b>Distance</b>	24	13	00	37
<b>Bi-Focal</b>	01	00	00	01
<b>Active Users</b>				<b>20 out of 20</b>



**2<sup>ND</sup> QUARTER (JANUARY-JUNE) 2024 MONTH PERFORMANCE**

**DRIVERS SCREENING -MATIARI**

	<b>Male</b>	<b>Female</b>	<b>Transgender</b>	<b>Total</b>
<b>No. of Screening:</b>	<b>1,415</b>	<b>00</b>	<b>00</b>	<b>1,415</b>
<b>+ove Outcome:</b>	<b>186</b>	<b>00</b>	<b>00</b>	<b>186</b>
<b>Triaged Patients</b>	<b>186</b>	<b>00</b>	<b>00</b>	<b>186</b>
<b>Referred to Ophthalmologist:</b>	<b>00</b>	<b>00</b>	<b>00</b>	<b>00</b>
<b>Attended Ophthalmologist</b>	<b>00</b>	<b>00</b>	<b>00</b>	<b>00</b>
<b>Referred at SIOVS</b>	<b>12</b>	<b>00</b>	<b>00</b>	<b>12</b>
<b>Eye Procedures at SIOVS</b>	<b>12</b>	<b>00</b>	<b>00</b>	<b>12</b>
<b>Glasses Prescribed</b>	<b>55</b>	<b>00</b>	<b>00</b>	
<b>Near</b>	43	00	00	<b>43</b>
<b>Distance</b>	10	00	00	<b>10</b>
<b>Bi-Focal</b>	02	00	00	<b>02</b>
<b>Glasses Dispensed</b>	<b>53</b>	<b>00</b>	<b>00</b>	
<b>Near</b>	43	00	00	<b>43</b>
<b>Distance</b>	10	00	00	<b>10</b>
<b>Bi-Focal</b>	00	00	00	<b>00</b>
<b>Active Users</b>				<b>01 out 01</b>

**2<sup>ND</sup> QUARTER (JANUARY-JUNE) 2024 MONTH PERFORMANCE****COMMUNITY SCREENING -KHAIRPUR**

	<b>Male</b>	<b>Female</b>	<b>Transgender</b>	<b>Total</b>
<b>No. of Screening:</b>	<b>5,930</b>	<b>5,561</b>	<b>09</b>	<b>11,500</b>
<b>+ove Outcome:</b>	<b>2,965</b>	<b>2,421</b>	<b>02</b>	<b>53,88</b>
<b>Triaged Patients</b>	<b>2,911</b>	<b>2,443</b>	<b>02</b>	<b>5,356</b>
<b>Referred to Ophthalmologist:</b>	<b>184</b>	<b>109</b>	<b>00</b>	<b>293</b>
<b>Attended Ophthalmologist</b>	<b>105</b>	<b>67</b>	<b>00</b>	<b>172</b>
<b>Referred at SIOVS</b>	<b>00</b>	<b>00</b>	<b>00</b>	<b>00</b>
<b>Eye Procedures at SIOVS</b>	<b>00</b>	<b>00</b>	<b>00</b>	<b>00</b>
<b>Glasses Prescribed</b>	<b>602</b>	<b>373</b>	<b>00</b>	<b>975</b>
<b>Near</b>	237	208	00	445
<b>Distance</b>	299	129	00	428
<b>Bi-Focal</b>	66	36	00	102
<b>Glasses Dispensed</b>	<b>21</b>	<b>27</b>	<b>00</b>	<b>48</b>
<b>Near</b>	00	00	00	00
<b>Distance</b>	21	27	00	48
<b>Bi-Focal</b>	00	00	00	00
<b>Active Users</b>				<b>11 out of 14</b>

**2<sup>ND</sup> QUARTER (JANUARY-JUNE) 2024 MONTH PERFORMANCE**

**SCHOOL SCREENING -KHAIRPUR**

	<b>Male</b>	<b>Female</b>	<b>Transgender</b>	<b>Total</b>
<b>No. of Screening:</b>	<b>786</b>	<b>646</b>	<b>00</b>	<b>1,432</b>
<b>+ove Outcome:</b>	<b>51</b>	<b>30</b>	<b>00</b>	<b>81</b>
<b>Triaged Patients</b>	<b>31</b>	<b>10</b>	<b>00</b>	<b>41</b>
<b>Referred to Ophthalmologist:</b>	<b>04</b>	<b>00</b>	<b>00</b>	<b>04</b>
<b>Attended Ophthalmologist</b>	<b>01</b>	<b>00</b>	<b>00</b>	<b>01</b>
<b>Referred at SIOVS</b>	<b>00</b>	<b>00</b>	<b>00</b>	<b>00</b>
<b>Eye Procedures at SIOVS</b>	<b>00</b>	<b>00</b>	<b>00</b>	<b>00</b>
<b>Glasses Prescribed</b>	<b>01</b>	<b>02</b>	<b>00</b>	<b>03</b>
<b>Near</b>	00	00	00	00
<b>Distance</b>	01	02	00	03
<b>Bi-Focal</b>	00	00	00	00
<b>Glasses Dispensed</b>	<b>00</b>	<b>00</b>	<b>00</b>	<b>00</b>
<b>Near</b>	00	00	00	00
<b>Distance</b>	00	00	00	00
<b>Bi-Focal</b>	00	00	00	00
<b>Active Users</b>				<b>03 out of 03</b>

**2<sup>ND</sup> QUARTER (JANUARY-JUNE) 2024 MONTH PERFORMANCE****COMMUNITY SCREENING -LARKANA**

	<b>Male</b>	<b>Female</b>	<b>Transgender</b>	<b>Total</b>
<b>No. of Screening:</b>	<b>2,385</b>	<b>7,992</b>	<b>01</b>	<b>10,378</b>
<b>+ove Outcome:</b>	<b>567</b>	<b>3,157</b>	<b>00</b>	<b>3,724</b>
<b>Triaged Patients</b>	<b>71</b>	<b>142</b>	<b>00</b>	<b>213</b>
<b>Referred to Ophthalmologist:</b>	<b>188</b>	<b>272</b>	<b>00</b>	<b>460</b>
<b>Attended Ophthalmologist</b>	<b>02</b>	<b>01</b>	<b>00</b>	<b>03</b>
<b>Referred at CMC</b>	<b>00</b>	<b>01</b>	<b>00</b>	<b>01</b>
<b>Eye Procedures at CMC</b>	<b>00</b>	<b>01</b>	<b>00</b>	<b>01</b>
<b>Glasses Prescribed</b>	<b>10</b>	<b>14</b>	<b>00</b>	<b>24</b>
<b>Near</b>	<b>01</b>	<b>03</b>	<b>00</b>	<b>04</b>
<b>Distance</b>	<b>08</b>	<b>11</b>	<b>00</b>	<b>19</b>
<b>Bi-Focal</b>	<b>01</b>	<b>00</b>	<b>00</b>	<b>01</b>
<b>Glasses Dispensed</b>	<b>09</b>	<b>11</b>	<b>00</b>	<b>20</b>
<b>Near</b>	<b>00</b>	<b>00</b>	<b>00</b>	<b>00</b>
<b>Distance</b>	<b>08</b>	<b>11</b>	<b>00</b>	<b>19</b>
<b>Bi-Focal</b>	<b>01</b>	<b>00</b>	<b>00</b>	<b>01</b>
<b>Active Users</b>				<b>05 out of 05</b>

**2<sup>ND</sup> QUARTER (JANUARY-JUNE) 2024 MONTH PERFORMANCE**

**SCHOOL SCREENING -LARKANA**

	<b>Male</b>	<b>Female</b>	<b>Transgender</b>	<b>Total</b>
<b>No. of Screening:</b>	<b>1,087</b>	<b>205</b>	<b>00</b>	<b>1,292</b>
<b>+ove Outcome:</b>	<b>180</b>	<b>186</b>	<b>00</b>	<b>366</b>
<b>Triaged Patients</b>	<b>00</b>	<b>00</b>	<b>00</b>	<b>00</b>
<b>Referred to Ophthalmologist:</b>	<b>00</b>	<b>00</b>	<b>00</b>	<b>00</b>
<b>Attended Ophthalmologist</b>	<b>00</b>	<b>01</b>	<b>00</b>	<b>01</b>
<b>Referred at CMC</b>	<b>00</b>	<b>01</b>	<b>00</b>	<b>01</b>
<b>Eye Procedures at CMC</b>	<b>00</b>	<b>00</b>	<b>00</b>	<b>00</b>
<b>Glasses Prescribed</b>	<b>00</b>	<b>00</b>	<b>00</b>	<b>00</b>
<b>Near</b>	00	00	00	00
<b>Distance</b>	00	00	00	00
<b>Bi-Focal</b>	00	00	00	00
<b>Glasses Dispensed</b>	<b>00</b>	<b>00</b>	<b>00</b>	<b>00</b>
<b>Near</b>	00	00	00	00
<b>Distance</b>	00	00	00	00
<b>Bi-Focal</b>	00	00	00	00
<b>Active Users</b>				<b>03 out of 03</b>

**2<sup>ND</sup> QUARTER (JANUARY-JUNE) 2024 MONTH PERFORMANCE****COMMUNITY SCREENING –SHAHEED BENAZIR ABAD**

	<b>Male</b>	<b>Female</b>	<b>Transgender</b>	<b>Total</b>
<b>No. of Screening:</b>	<b>12,518</b>	<b>15,886</b>	<b>367</b>	<b>28,771</b>
<b>+ove Outcome:</b>	<b>558</b>	<b>671</b>	<b>02</b>	<b>1,231</b>
<b>Triaged Patients</b>	<b>543</b>	<b>778</b>	<b>01</b>	<b>1,322</b>
<b>Referred to Ophthalmologist:</b>	<b>15</b>	<b>20</b>	<b>00</b>	<b>35</b>
<b>Attended Ophthalmologist</b>	<b>02</b>	<b>04</b>	<b>00</b>	<b>06</b>
<b>Referred at SIOVS</b>	<b>01</b>	<b>00</b>	<b>00</b>	<b>01</b>
<b>Eye Procedures at SIOVS</b>	<b>00</b>	<b>00</b>	<b>00</b>	<b>00</b>
<b>Glasses Prescribed</b>	<b>212</b>	<b>323</b>	<b>00</b>	<b>535</b>
<b>Near</b>	108	184	00	292
<b>Distance</b>	20	51	00	71
<b>Bi-Focal</b>	84	88	00	172
<b>Glasses Dispensed</b>	<b>00</b>	<b>00</b>	<b>00</b>	<b>00</b>
<b>Near</b>	00	00	00	00
<b>Distance</b>	00	00	00	00
<b>Bi-Focal</b>	00	00	00	00
<b>Active Users</b>				<b>15 out of 16</b>

**2<sup>ND</sup> QUARTER (JANUARY-JUNE) 2024 MONTH PERFORMANCE****SCHOOL SCREENING –SHAHEED BENAZIR ABAD**

	<b>Male</b>	<b>Female</b>	<b>Transgender</b>	<b>Total</b>
<b>No. of Screening:</b>	<b>1323</b>	<b>126</b>	<b>00</b>	<b>1449</b>
<b>+ove Outcome:</b>	<b>04</b>	<b>00</b>	<b>00</b>	<b>04</b>
<b>Triaged Patients</b>	<b>04</b>	<b>00</b>	<b>00</b>	<b>04</b>
<b>Referred to Ophthalmologist:</b>	<b>00</b>	<b>00</b>	<b>00</b>	<b>00</b>
<b>Attended Ophthalmologist</b>	<b>00</b>	<b>00</b>	<b>00</b>	<b>00</b>
<b>Referred at SIOVS</b>	<b>00</b>	<b>00</b>	<b>00</b>	<b>00</b>
<b>Eye Procedures at SIOVS</b>	<b>00</b>	<b>00</b>	<b>00</b>	<b>00</b>
<b>Glasses Prescribed</b>	<b>00</b>	<b>00</b>	<b>00</b>	<b>00</b>
<b>Near</b>	<b>00</b>	<b>00</b>	<b>00</b>	<b>00</b>
<b>Distance</b>	<b>00</b>	<b>00</b>	<b>00</b>	<b>00</b>
<b>Bi-Focal</b>	<b>00</b>	<b>00</b>	<b>00</b>	<b>00</b>
<b>Glasses Dispensed</b>	<b>00</b>	<b>00</b>	<b>00</b>	<b>00</b>
<b>Near</b>	<b>00</b>	<b>00</b>	<b>00</b>	<b>00</b>
<b>Distance</b>	<b>00</b>	<b>00</b>	<b>00</b>	<b>00</b>
<b>Bi-Focal</b>	<b>00</b>	<b>00</b>	<b>00</b>	<b>00</b>
<b>Active Users</b>				<b>02 out of 02</b>